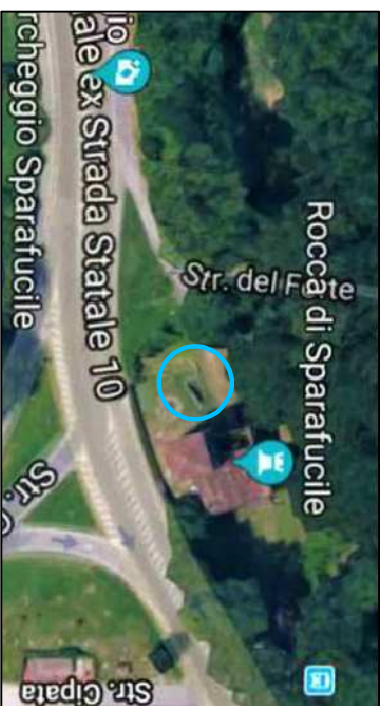


# Collocazione Totem

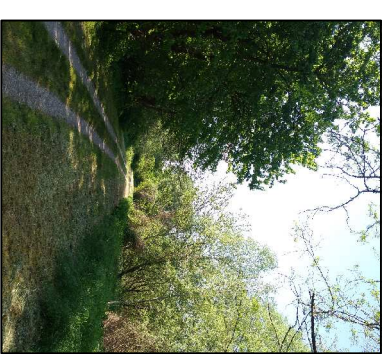
## TAPPA 1

Rocca Sparafucile



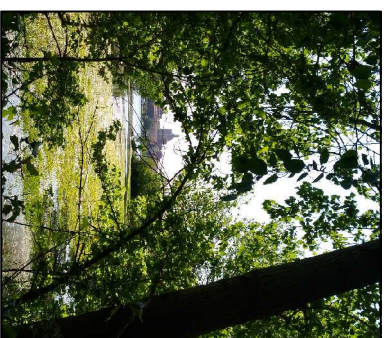
## TAPPA 5

Passaggio  
limitrofo al bosco



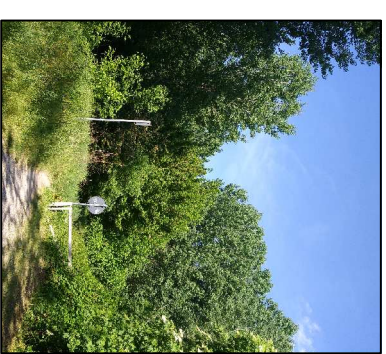
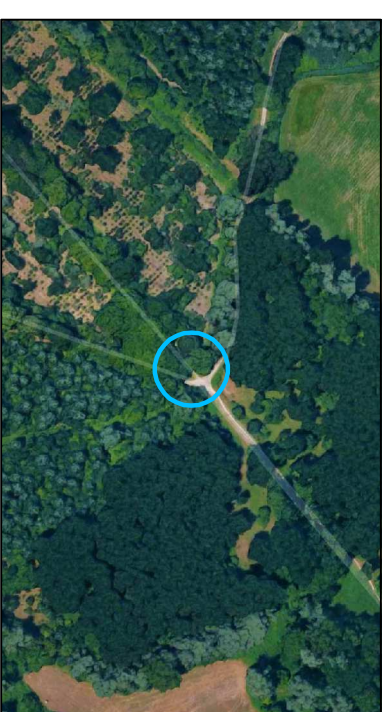
## TAPPA 2

Darsena



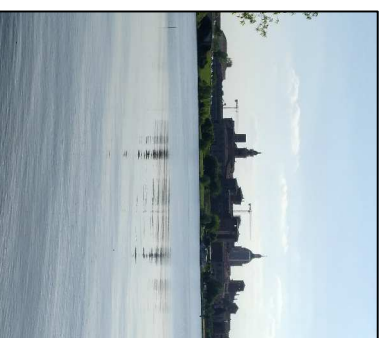
## TAPPA 6

Bivio d'accesso  
alla radura



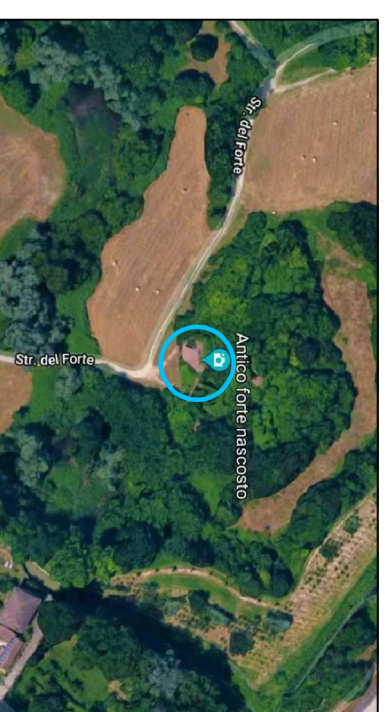
## TAPPA 3

Scorcio di  
Mantova dalla  
sponda del lago



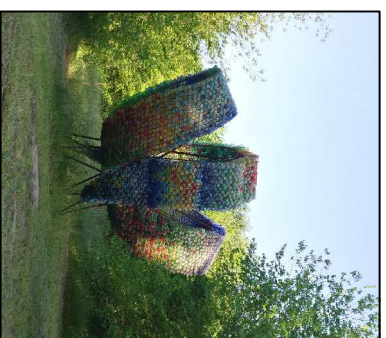
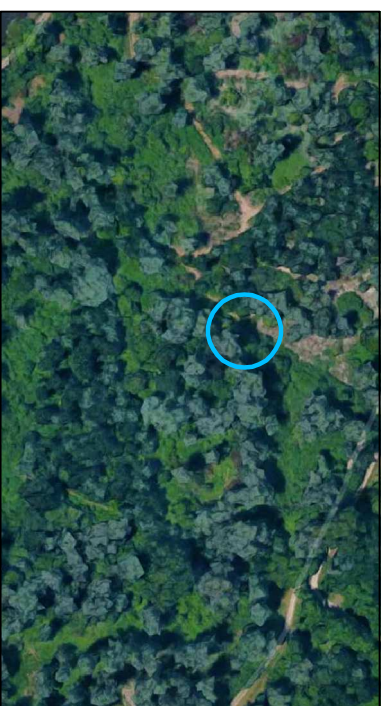
## TAPPA 7

Entrata forte  
"Lunetta  
Fossamana"



## TAPPA 4

Opera "Nuvola di  
Luce"



La Mantova dei Forti

Enrico Fermi LSSA MN

COALCO Coprogettare

Alternanza Collaborativa

Putleti Verdi

Stancari Martina  
Berra Alice  
Tonini Giulia  
Sissa Gabriele  
Sabatello Simone  
Lui Tommaso